



340 Route 16B • Center Ossipee, NH 03814
800-543-3580 • 603-539-4538 • Fax: 603-539-2183
MiteeBite.com

Cad files available online

MADE IN THE USA

TalonGrip™ Instructions

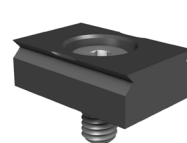
Q: How tight should material be clamped in the jaws?

A: Torque for a typical 6" vise is approx. 30 ft/lbs when using 2 grippers per jaw.

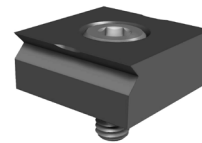
NOTE: if using our large 8" jaws (p/n 32088) in vise torque to 40-45 ft/lbs. Be certain the grips penetrate the material at least .010"-.015". More penetration is desired for softer materials such as brass, aluminum and mild steel.

Q: What materials can be clamped with the jaws?

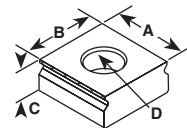
A: Any material that has a Rockwell "C" hardness of 40 or softer. Aluminum, brass, bronze, copper, composites, plastics, mild and carbon steels, high nickel materials, inconel, titanium, stainless steels, tool steels have all been gripped and machined successfully with the TalonGrip™ Systems Jaws. Brittle materials like some plastics, ceramics and composites may develop cracks and chipping from the grips. **You will have to determine for yourself if the Jaws and Grips will work in those types of materials.**



32050/33050



32075/33075



	Part No.	Description	A	B	C	D	Recommended Gripping Height
INCH	32050	Grips	.75	.500	.250	10-32	.060-.075
	32075	Fixture Grips	.75	.750	.312	10-32	.060-.120
METRIC	33050	Grips	19.05	12.7	6.35	M5	1.5mm-1.9mm
	33075	Fixture Grips	19.05	19.05	7.92	M5	1.5mm-3.0mm

