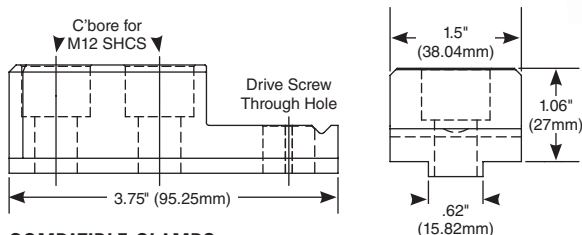


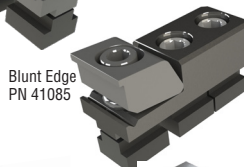
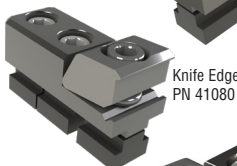
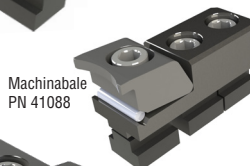
## Heavy-Duty™ T-Slot Instructions

The Heavy Duty™ T-Slot clamp is intended for mounting to T-Slot tables with the three provided t-nuts and mounting screws. Each t-nut is coated with our Tungsten Carbide coating for added friction. The HD T-Slot clamp is designed to be used with any of our large M12 Pitbull® Clamps (12,000 lbs/50,000 N.) or OK-VISE® DK model clamps (20,000 lbs/89,000 N.).



### COMPATIBLE CLAMPS

Part No.	Description
47131	OK-Vise® Clamp Model DK2-VT with Serrated Jaws
47132	OK-Vise® Clamp Model DK2-VT-S with Smooth Jaws
47141	OK-Vise® Clamp Model DK2-VT+5S with Machinable & Smooth Jaw
47144	OK-Vise® Clamp Model DK2-VT-TS with Tapped Holes & Smooth Jaw
47147	OK-Vise® Clamp Model DK2-VT-RS with Serrated Jaw & Smooth Jaw
47151	OK-Vise® Clamp Model DK2-WT Double Wedge with Serrated Jaws
47189	OK-Vise® Clamp Model DK2-VT-B with Serrated Ball & Smooth Jaw
56080	Pitbull® Clamp Knife Edge Tool Steel (2/pk)
56085	Pitbull® Clamp Blunt Edge Tool Steel (2/pk)
56088	Pitbull® Clamp Machinable Tool Steel (2/pk)



### PROPER USE:

1. Hand tighten two rear mounting screws and clamp screw just until t-nuts are floating in t-slot
2. Slide clamp up to workpiece
3. Tighten two rear mounting screws 110 Ft/Lbs (150 N.m.) maximum
4. Tighten clamp to hold part 110 Ft/Lbs (150 N.m.) maximum

### INCLUDED HARDWARE FOR SPECIFIED ASSEMBLY:

- (3) 16mm t-nuts with Tungsten Carbide Coating medium grit
- (2) M12X35mm SHCS for t-nuts
- (1) M12X45mm SHCS clamp screw for use with Pitbull®
- (1) M12X40mm SHCS for use with single wedge OK-Vise®
- (1) M12X50mm SHCS for use with double wedge OK-Vise®

**NOTE:** Clamp contact surfaces have option of application of Texture Grip Tungsten Carbide Coating. For more information, search "Tungsten Carbide" on our website - [MiteeBite.com](http://MiteeBite.com).

### REPLACEMENT T-NUTS

Part No.	Description	T-Slot Size
41016	Carbide coated M12 T-nut (2/pk)	16mm

