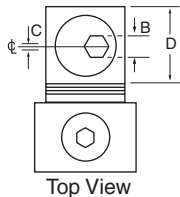
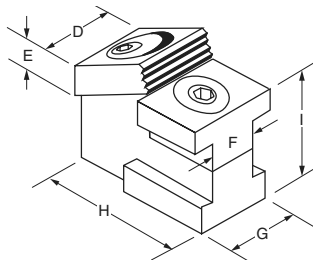




340 Route 16B • Center Ossipee, NH 03814
 800-543-3580 • 603-539-4538 • Fax: 603-539-2183
 MiteeBite.com

Cad files available online

MADE IN THE USA



Advant-Edge Clamp Metric Instructions

1. Insert clamp in t-slot.
2. Tighten cam screw all the way down, then back off approximately one turn.
3. Position cam screw as shown.
4. Hold clamp against workpiece and tighten mounting screw to lock into t-slot.
5. Clamp is now ready to use.

Part Number	Cam Screw	T-Slot Size	B	C	D	E	F	G	H	I	Max. Torque/ Holding Force (N.m./N.)	Replacement Square Washer
52224*	50372	16	8	2	25.4	9.5	16	28.5	48	28	88.00/17800	51016

*Kit of Two - Part no. 52424

Torque mounting bolt to 150N.m.