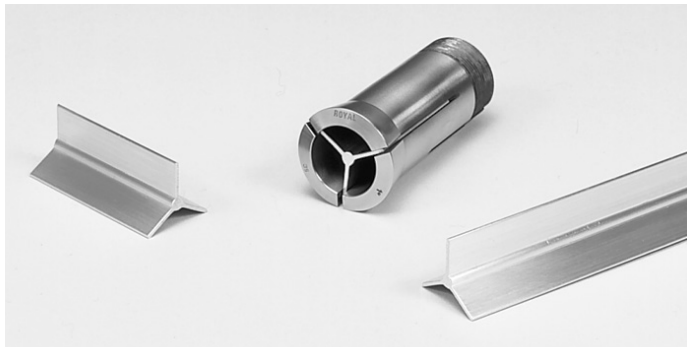




340 Route 16B • Center Ossipee, NH 03814  
800-543-3580 • 603-539-4538 • Fax: 603-539-2183  
**MiteeBite.com**

*Cad files available online*

MADE IN THE USA



## Collet Stop Instructions

1. Cut stock to desired length.
2. Insert into collet slots, tighten, face off, and deburr.
3. Remove and insert machined end into collet. Face off to desired length, and deburr.
4. Seat into collet and clamp workpiece.