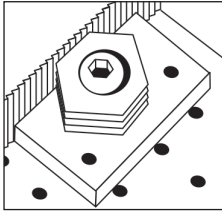
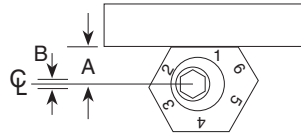


## Series 9 Instructions



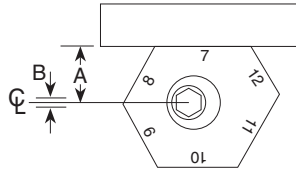
This clamp provides clamping of different size workpieces merely by rotating the clamp to one of its other edges. Each of the six clamping surfaces is a different distance from the centerline by .0394 as shown on charts (A). Clamp travel is .080 (.040 forward and aft from centerline B).

**Part No. 90110** (1-6 Smooth)  
**Part No. 90115** (1-6 Serrated)



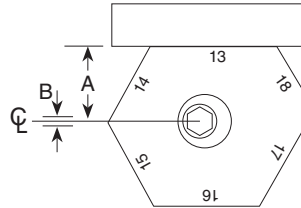
Face No.	A* (Distance from C)
1	.4724
2	.5118
3	.5512
4	.5906
5	.6299
6	.6693

**Part No. 90120** (7-12 Smooth)  
**Part No. 90125** (7-12 Serrated)



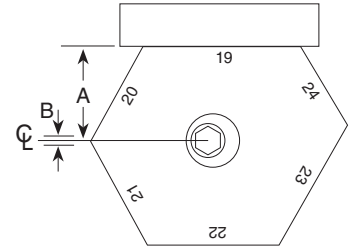
Face No.	A* (Distance from C)
7	.7086
8	.7480
9	.7874
10	.8268
11	.8661
12	.9055

**Part No. 90130** (13-18 Smooth)  
**Part No. 90135** (13-18 Serrated)



Face No.	A* (Distance from C)
13	.9449
14	.9842
15	1.0236
16	1.0630
17	1.1024
18	1.1417

**Part No. 90140** (19-24 Smooth)  
**Part No. 90145** (19-24 Serrated)



Face No.	A* (Distance from C)
19	1.1811
20	1.2205
21	1.2598
22	1.2992
23	1.3386
24	1.3780

### TECHNICAL INFORMATION

Max. Torque/ Holding Force	Use Screw Size	Hex Key Size	Replacement Cam Screw
65 Ft Lbs / 4,000 Lbs	1/2 - 13	5/16	10374

A\* - Location to drill and tap from edge of workpiece.