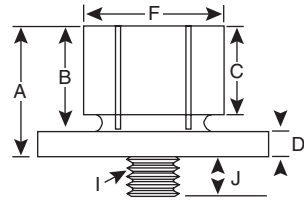
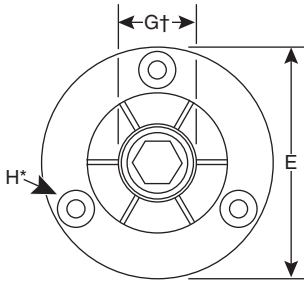
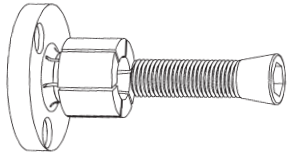


## ID Xpansion™ Metric Clamp Instructions



G† - Minimum diameter the "F" dimension can be machined or turned down to.

H\* - (3) Mounting Screws included - (4) for model numbers #9 & #10.

\*\*Model #10 Made from 7075-T6511 aluminum.

### Model #00 - #6

- ▶ Machine a counterbore in a fixture to fit the flange OD dimension specified in column "E" to the desired depth. Drill and tap the ID Clamp mounting holes per the thread type specified in column "H". Drill and tap a threaded hole specified in column "I" to a minimum full thread depth specified in column "J" and located in the center of the counterbore for the tapered screw.
- ▶ Expand ID Clamp approximately 0.08mm over the fully relaxed diameter and using either a lathe, or a mill machine it down to fit the workpiece, typically the low limit size of the workpiece bore. If machining the ID Clamp on a lathe, use the hex nut provided against the back of the ID Clamp to tighten the tapered screw. The supplied hex nut is typically only used for machining the ID Clamp, not for in-service use.
- ▶ Max. recommended expansion from fully relaxed for the #00 through #6 ID Clamps is as follows: #00 0.13mm; #0 0.25mm; #1 0.33mm; #2 0.38mm; #3 0.38mm; #4 0.38mm; #5 0.38mm; #6 0.38mm.

### Model #7 - #10

- ▶ In addition to the general instructions for using the #00-#6 ID Clamps to left, a Locking Ring (LR) is supplied to ensure the clamping segments remain rigid while machining the larger ID Clamps to the required size. #9 and #10 ID Clamps are supplied with 2 Locking Rings, the 2nd smaller Locking Ring is supplied in the event the ID Clamp is machined smaller than the diameter of the larger LR groove.
- ▶ Insert the Locking Ring into the provided face groove of the ID Clamp and tighten the Tapered Screw to approximately 54.23 N.m. Machine ID Clamp to within +0.08mm to +0.13mm over the low limit bore size of the workpiece. Loosen the Tapered Screw to remove the Locking Ring and test fitment with workpiece. If workpiece fitment is too tight, repeat the machining process to achieve as close a fit to the low limit size of the workpiece bore as is desired for the application.
- ▶ Maximum recommended expansion from fully relaxed for the #7 through #10 ID Clamps is as follows: #7 0.38mm; #8 0.38mm; #9 0.50mm; #10 0.20mm.

**GENERAL NOTES** - ID Clamps #00 through #9 are manufactured from 12L14 "Free Machining" low carbon steel. The #10 ID Clamp is manufactured from 7075-T6511 "High Strength" aluminum alloy. Overly aggressive material removal rates/practices are not recommended when machining "to size" due to the deep relief groove and segmenting (slotting) that provides for the characteristic expansion qualities of our ID Clamps.

Longer length tapered screws are available for all ID Clamps by adding an "L" to the end of the standard tapered screw part number, with the exception of M16 Metric tapered screws P/N 38052 and P/N 38072, use P/N 38062L. For blind hole applications, please see our Manual Actuators, or call for availability of custom screws, or for other options.

Part No.	Model No.	Max. Expansion										Max. Torque (N.m.)	Holding Force (N.)	Repl. Tapered Screw	
		A	B	C	D	+ .000 E -.050	F	Not To Exceed	G†	H*	I				J
38000	#00	10.7	7.6	6.1	3.0	20.00	7.4	.13	4.1	M2 on 13.7 BHC	M2x12	4.1	.70	1113	38001
38050	#0	21.8	16.0	15.0	5.9	29.72	12.4	.25	7.1	M3 on 20.95 BHC	M4x25	7.2	5.00	4228	38002
38100	#1	24.9	19.0	15.0	5.9	31.50	14.2	.33	12.2	M3 on 23.1 BHC	M6x30	11.2	17.00	8455	38010
38150	#2	24.9	19.0	15.0	5.9	37.50	20.0	.38	13.5	M3 on 29.0 BHC	M8x30	13.2	34.00	11125	38020
38200	#3	28.6	22.2	17.5	6.4	50.00	27.0	.38	18.0	M4 on 39.4 BHC	M10x35	16.3	60.00	20025	38032
38250	#4	31.8	25.4	20.6	6.4	56.00	35.3	.38	23.0	M4 on 45.5 BHC	M12x40	20.3	150.00	26255	38042
38300	#5	39.6	31.8	27.0	7.9	69.50	42.0	.38	29.3	M5 on 55.9 BHC	M16x45	21.4	280.00	44500	38052
38350	#6	39.6	31.8	27.0	7.9	75.50	51.5	.38	29.3	M5 on 63.9 BHC	M16x45	21.4	280.00	44500	38052
38400	#7	45.5	37.6	32.3	7.9	107.50	77.7	.38	29.3	M6 on 92.6 BHC	M16x50	19.3	280.00	44500	38072
38450	#8	45.5	37.6	32.3	7.9	132.90	103.0	.38	29.3	M6 on 118.06 BHC	M16x50	19.3	280.00	44500	38072
38500	#9	45.5	37.6	32.3	7.9	132.90	175.0	.50	29.3	M6 on 118.06 BHC	M16x50	19.3	280.00	44500	38072
38550	#10**	45.5	37.6	32.3	7.9	152.40	250.2	2.00	29.3	M6 on 133.35 BHC	M16x50	19.3	170.00	26000	38072