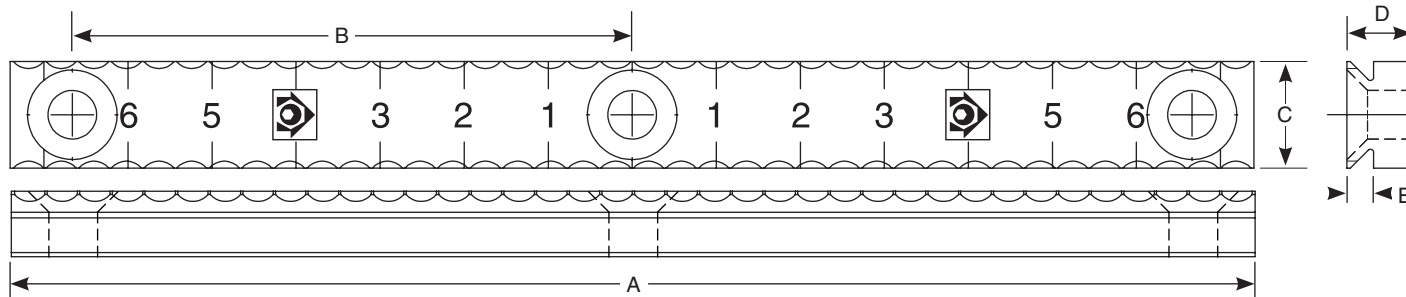


## TalonGrip™ Long Length Serrated Grip Instructions

1. Set grip in TalonGrip™ jaw, install with provided screws. For fixture, machine slot .001"-.003" (.025mm-.075mm) larger than C, drill and tap on  $\phi$  provided.
2. Torque screws to 4.5ft-Lbs (6.1Nm) for FHCS and 2.5ft-Lbs (3.3Nm) for LHCS.
3. Tighten vise until penetration is felt. As a general rule an additional  $\frac{1}{4}$  -  $\frac{3}{4}$  turn of vise handle is needed to secure workpiece which is dependent on material type and vise model. Recommended penetration is .005"-.015". See webpage for test data.



Scan QR code for results of  
 TalonGrip™ Penetration Testing



Part No.	Description	A (metric)	B (metric)	C (metric)	D (metric)	Gripping Height/E (metric)*	Fits Jaw Set	Per Pack
33052	Talongrip™ Long Length Serrated Grip	1.969" (50.01mm)	1.500" (38.10mm)	.750" (19.05mm)	.375" (9.52mm)	.050" -.160" (1.27 - 4.06mm)	32088	2/pk
33054	Talongrip™ Long Length Serrated Grip	3.888" (98.75mm)	1.624" (41.25mm)	.500" (12.70mm)	.312" (7.92mm)	.050" -.125" (1.27 - 3.17mm)	32044/32068	2/pk
33056	Talongrip™ Long Length Serrated Grip	5.832" (148.13mm)	2.625" (66.68mm)	.500" (12.70mm)	.312" (7.92mm)	.050" -.125" (1.27 - 3.17mm)	32066	2/pk

**NOTE:** 10-32x1/2 and M5x12 screws provided. Due to the similar thread pitch on both of these screws, either may be used in M5 threaded holes as long as they do not exceed 1" (25mm) in length. The 10-32 seats better in the gripper rail and is less likely to bind during removal.

\*Gripping height is .157" (3.99mm) for 33052 and .117" (2.97mm) for 33054/33056 when mounted to our standard vise jaws.